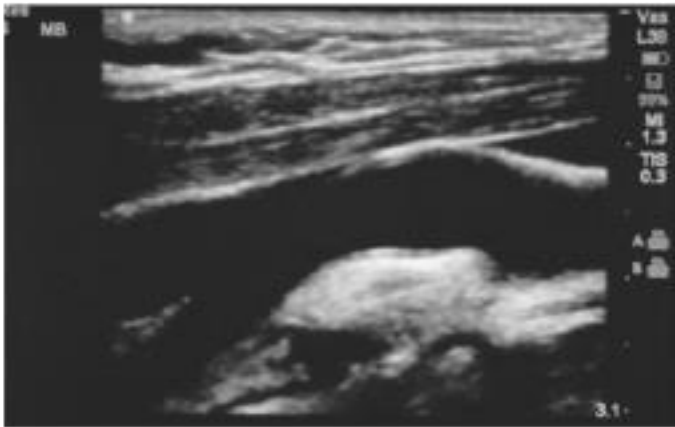


Take a step toward staying **Healthy & Active**

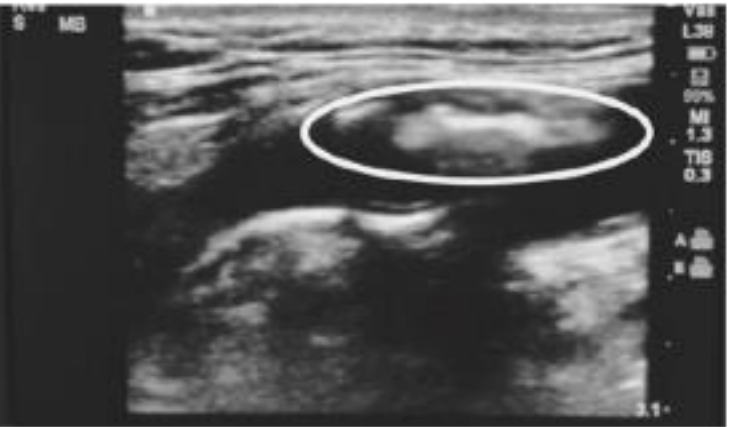
Life Line Screening goes beyond regular checkups to provide a more thorough look at your health.

Be Smart: Do More For Your Cardiovascular Health

No Plaque Buildup



Plaque Buildup



Advanced ultrasound technology looks inside your arteries for signs of plaque buildup. That's why **9 out of 10 cardiovascular doctors** support preventive screenings for those with key risk factors.¹

Adults age 50+ and those 40 and older with one or more risk factors for cardiovascular disease should be screened.

¹Key Risk Factors include: *High blood pressure, high cholesterol, diabetes, obesity, smoking, family history.

We are coming to your neighborhood.

November is National Diabetes Awareness Month

When: Wednesday, January 3, 2024

Where: Tulsa Bible Church

5838 S Sheridan Rd, Tulsa, OK 74145

Sponsored by: Oklahoma Heart Institute

To register for your appointment and to receive the special discount,
please call **1-800-640-6307** or visit **LLSA.SOCIAL/HC**

Scan here



Trusted by Hospitals Nationwide.

Life Line Screening has partnered with over **100 hospitals** across the country and has conducted over **10 million screenings** since 1993.



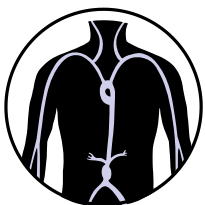
Carotid Artery Disease

an ultrasound is performed to screen the carotid arteries (a pair of blood vessels in the neck that deliver blood to your brain) for buildup of fatty plaque. This buildup, called atherosclerosis, is one of the leading causes of stroke.



Atrial Fibrillation (AFib)

a 6-lead electrocardiogram (EKG) is performed by placing sensors on the arms and legs to screen for Atrial Fibrillation. AFib can lead to blood clots, stroke, and heart failure, and other heart-related complications.²



Abdominal Aortic Aneurysm (AAA)

an ultrasound is performed to screen the abdominal aorta for the presence of an enlargement or aneurysm. AAA can lead to a ruptured aortic artery, which is a life-threatening medical emergency.



Peripheral Arterial Disease (PAD)

an Ankle-Brachial Index (ABI) test is performed using blood pressure cuffs on the arms and legs. It is important to screen for PAD because it increases the risk of coronary artery disease, heart attack, or stroke.³

4 Screenings for Only \$149
Special Package Pricing

² <https://www.heart.org/en/health-topics/atrial-fibrillation>

³ <https://www.heart.org/en/health-topics/peripheral-artery-disease/about-peripheral-artery-disease-pad>

No single screening can detect all risk factors for all conditions, such as and including the presence of coronary artery disease.

Screening results are provided to you in about 14 days. We direct all participants with abnormal results to take the report to their physician. Appropriate modification of risk factors (including high blood pressure, smoking, heart disease, diabetes and poor diet) is also necessary for cardiovascular disease prevention. Our screenings cannot detect all forms of stroke risk or cardiovascular disease. All tests are for screening purposes only. You should consult with your personal physician regarding your screening results. Price does not include any applicable review fees. Insurance Note: Life Line Screening does not participate in the Medicare program and the cost of our screening services is not covered or reimbursable by Medicare. Life Line Screening does not file insurance claims nor provide referrals to any physician's group or hospital. If you are unable to attend the screening for any reason whatsoever, we will issue a gift card for the full amount to be used by you, or anyone you choose, for future screening services.